



XPEH SERIES

Explosion Proof LED Emergency Light & Exit Sign



PROJECT: _____
FIXTURE TYPE: _____
LOCATION: _____
CONTACT/PHONE: _____



PRODUCT DESCRIPTION

XPEH series LED Emergency Light and Exit Sign uses a maintenance free LED light source and sealed Ni-Cad batteries. This emergency fixture meets or exceeds NFPA 70, NFPA 101, EPA Energy Star and OSHA requirements. These fixtures are also suitable for installations in wet or damp locations where salt water spray is possible.

MAXIMUM INPUT POWER

- XPEH Emergency Light with:
- Red Exit Sign & 2 LED heads - 6.5 W
- Red Exit Sign & 4 LED heads - 10.5 W
- Green Exit Sign & 2 LED heads - 7 W
- Green Exit Sign & 4 LED heads - 11W

FEATURES

- Copper-free die-cast aluminum housing and LED heads with baked-on epoxy powder- coat finish
- Impact resistant tempered glass lens.
- Explosion proof union provides horizontal adjustment of the LED heads.
- Easy wiring access gasketed screw cap cover.
- Separate push-to-test and pilot light for local and remote ability to test batteries independently.
- Separate sealed Ni-Cad batteries for local and remote heads as well as exit sign provide an extra degree of reliability.
- Single or double face acrylic edge-lit panel.
- Maintenance free and high efficient LEDs with medium beam optics is furnished as standard. Wide and narrow beam optics are available as option.
- 3 hour emergency operation standard.
- LED head circuit boards mounted on anodized die cast aluminum ball and socket joints allow adjustment in vertical plane and allow LEDs to dissipate heat properly.
- Anodized copper free aluminum with stainless steel pin hinges.
- 1" NPT hubs, one on each side and one on top.
- Stainless steel external hardware.
- Exit Sign with Red or Green LEDs and Legend, with easy to install chevrons.



ORDERING INFORMATION

| Series | No. of Faces | Legend Color | Voltage/Frequency | Installed Heads | Remote Heads | Options |
|---|--------------|--------------|--------------------|-----------------|--------------|----------------------------|
| XPEH | 1 = Single | R = Red | DT = 120/277V 60HZ | 0 = None | 0 = None | N = Narrow Beam Optics |
| Class I, Division 1, Groups C & D | 2 = Double | G = Green | 24 = 220-240V 50HZ | 1 = One | 1 = One | W = Wide Beam Optics |
| Class II, Division 1, Groups E, F & G Class III | | | | 2 = Two | 2 = Two | X = EXIT Legend in other |
| Class I, Zone 1, Groups IIA, IIB, | | | | | 3 = Three | languages |
| UL 844, 1598, 8750, 924 | | | | | 4 = Four | Language must be Specified |
| UL 1598A Marine Outside Type | | | | | | |
| (Salt Water) USCG Regulation 46 | | | | | | |
| CFR Subparts 111.75-15 (e) | | | | | | |
| & 112.43 CUL IP65 NEMA 4X | | | | | | |
| Suitable for Wet Locations | | | | | | |

EXAMPLE: XPEH-1-R-DT-1-2-N



XPEH SERIES

Explosion Proof LED Emergency Light & Exit Sign

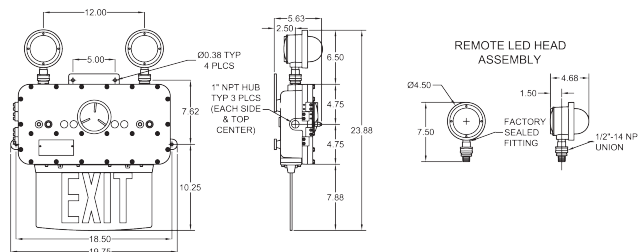


PROJECT: _____
FIXTURE TYPE: _____
LOCATION: _____
CONTACT/PHONE: _____

CLASSIFICATIONS

- Class I, Division 1, Groups C & D, Class II, Division 1, Groups E, F & G
- Class III
- Class I, Zone 1, Groups IIA, IIB
- UL 844, 1598, 8750 & 924
- UL 1598A Marine Outside Type (Salt Water)
- USCG Regulation 46 CFR Subparts 111.75-15(e) & 112.43
- CUL
- IP65
- NEMA 4X
- Suitable for Wet Locations
- Patent No. 7,287,347;
- Other patents pending

DIMENSIONS



Emergency Combo
Emergency Combo with Remote Heads Option*
Remote Head Assembly
*Remote Head Assemblies are shipped separately. (Additional weight of the emergency light is due to extra driver for remote heads.)

| Shipping Weight | Shipping Volume |
|-----------------|-----------------|
| 40.5 lbs. | 3.1 cu. ft. |
| 43.5 lbs. | 3.1 cu. ft. |
| 3.5 lbs. | 0.27 cu. ft. |

OPERATING TEMPERATURE RANGE

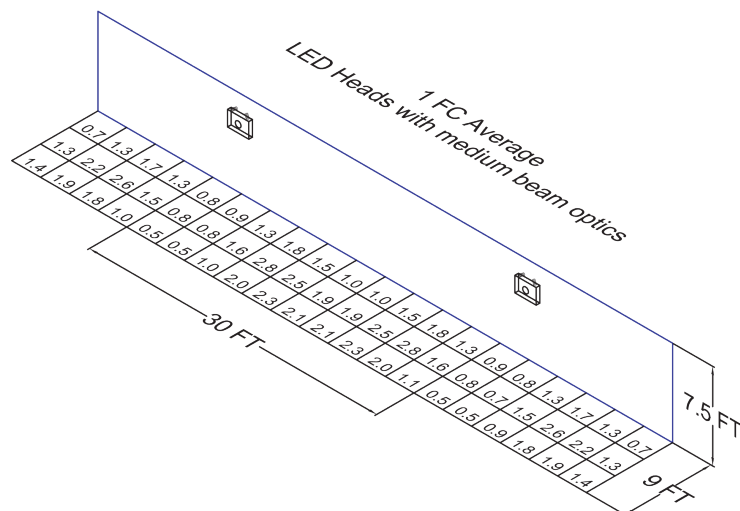
- Each Remote Head:
- Voltage: 22V DC. max.
- Current: 0.225 A (225mA)
- Max. Power: 5 W

CERTIFICATION GUIDE

| XPEH Series Emergency Combo with: | Ambient Temperature Range | Class I, Division 1 Groups C & D | Class II, Division 1 Groups E, F & G Class III | Simultaneous Presence Class I & II | UL 1598A Marine | CUL |
|--------------------------------------|------------------------------|-------------------------------------|--|--|--------------------|-----|
| Green Exit Sign | +10°C to +40°C | T6 | T6 | T6 | Yes | Yes |
| Red Exit Sign | +10°C to +55°C | T6 | T6 | T6 | Yes | Yes |

PHOTOMETRIC DATA

XPEH LED head with medium beam optics:



| | |
|-------------------------|--------|
| Total Lumens per Head | 420.78 |
| Output Power per Head | 4.83 |
| Efficacy (Lumens/Watts) | 87.12 |
| CRI | 72 |
| CCT | 5672 |

| | |
|--|------|
| Average Initial Footcandles at the Floor | 1.49 |
| Maximum Initial Footcandles at the Floor | 2.80 |
| Minimum Initial Footcandles at the Floor | 0.50 |
| Maximum to Minimum Ratio | 5.60 |