



CEDC Series - Ultra Thin

Low Profile or Recessed ~Class A~Die-Cast Exit Signage



PROJECT: _____
FIXTURE TYPE: _____
LOCATION: _____
CONTACT/PHONE: _____

PRODUCT DESCRIPTION

The CEDC specification grade, architectural LED die-cast aluminum exit combines a distinctive look with energy efficient LED technology. Ideal for new construction, renovation and remodeling projects. Providing a high quality and distinguished design, the CEDC Series is the fixture of choice whenever elegance and exceptional performance are demanded from the same fixture. These stylish, low-profile or recessed signs are illuminated with red or green super bright LEDs. Designer elegance period.

PRODUCT SPECIFICATIONS

CONSTRUCTION

Ultra Slim diecast aluminum LED emergency exit lighting system; the wall mount profile is 1/2" above the surface • The diecast outer housing contains a closely fitted acrylic lens. An LED array is recessed into the housing. The assembly is extremely rugged and can withstand severe impact and vibration without damage • For even further protection, clear polycarbonate security covers are available • Standard finishes are satin white and brushed aluminum

ELECTRICAL

Dual voltage 120/277VAC • Charge rate/power "ON" LED indicator light and push-to-test switch for mandated code compliance testing • Internal solid-state transfer switch • Solid-state, two-rate charger initiates battery charging to recharge a discharged battery in 24 hours • Surge and spike protected with a low voltage disconnect • The complete power supply module with optional NICAD battery pack is sealed within a phenolic plastic enclosure, which fits inside a standard 4" square deep J- box. AC and DC wiring is quickly attached with plug connectors.

LAMPS

Long life, energy saving Ultra high output LED lamps • LEDs feature up to 5 candela output in green or red to produce brilliant graphic illumination well above code minimums.

BATTERY

Sealed, maintenance-free nickel cadmium • Battery will operate the sign for a minimum of 90 minutes in the event of a power outage. (0°C – 50°C)

CODE COMPLIANCE

ETL Listed • Manufactured and tested to UL924 Standard • NFPA 101 Life Safety Code compliant • NEC and OSHA compliant.

WARRANTY

5-year warranty. Product specifications subject to change without notice.



DIAGNOSTIC OPTION

An advanced microprocessor monitors all charger functions and battery condition continuously with software to automatically perform all tests and visual indications required by UL924 Standard and NFPA 101.

OPTIONS:

DLC = Dual AC Input (120 VAC)
PEN = Pendant Mount 12"
PENX = Pendant Mount (Custom Length)
LE = End Mount Left
RE = End Mount Right
BL = Satin Black Face
BZ = Satin Bronze Face
DP = Damp Location
SD = Auto Battery Diagnostics
REC = Recessed Mount Kit
TDF = Thin Double Face
REM = Remote Exit for use in Master/Remote Set-up
For other Custom Colors or Options Contact Factory

ORDERING INFORMATION

Model	# Faces	Operation	Letter Color	Face Color	Mount	Options	Accessories
CEDC	1 = Single	A = AC Only	R = Red Letters	W = Satin White	TW = Top	See Above	PSC = Polycarbonate Security Cover
	2 = Double	B = Battery Backup	G = Green Letters	BA = Brushed Aluminum X = Custom	or Wall Mount		PF1 = Poly Face Shield Single Face PF2 = Poly Face Shield Double Face WG = Wire Guard REC = Recessed Mount Kit

Ordering Example: CEDC-1-B-R-BA-REC



CEDC Series - Ultra Thin

Low Profile or Recessed ~Class A~Die-Cast Exit Signage



PROJECT: _____
 FIXTURE TYPE: _____
 LOCATION: _____
 CONTACT/PHONE: _____

SUGGESTED SPECIFICATIONS

Supply and install Mule CEDC Series LED exit signs, available as unit equipment as AC-Only or with Battery back-up. The face and housing shall be of diecast aluminum with maximum thickness of 5/8" (single face). Lighting uniformity shall be better than 4:1 when measured over any illuminated area and average brightness will exceed 6 ft Lambert (21 Cd/m²). Life expectancy of the LEDs shall be in excess of 20 years. The power supply and charger shall be an isolated digital type with regulated current and voltage output to the lamp load and batteries (emergency models). AC supply shall be universal 120/277 VAC input via two-wire feed. Battery emergency operation at least 90 minutes. Battery charge time to restore full capacity after discharge shall be less than 24 hours.

BATTERY DIAGNOSTICS

BATTERY DIAGNOSTIC FUNCTIONS:

Microprocessor programmed to perform tests as follows:

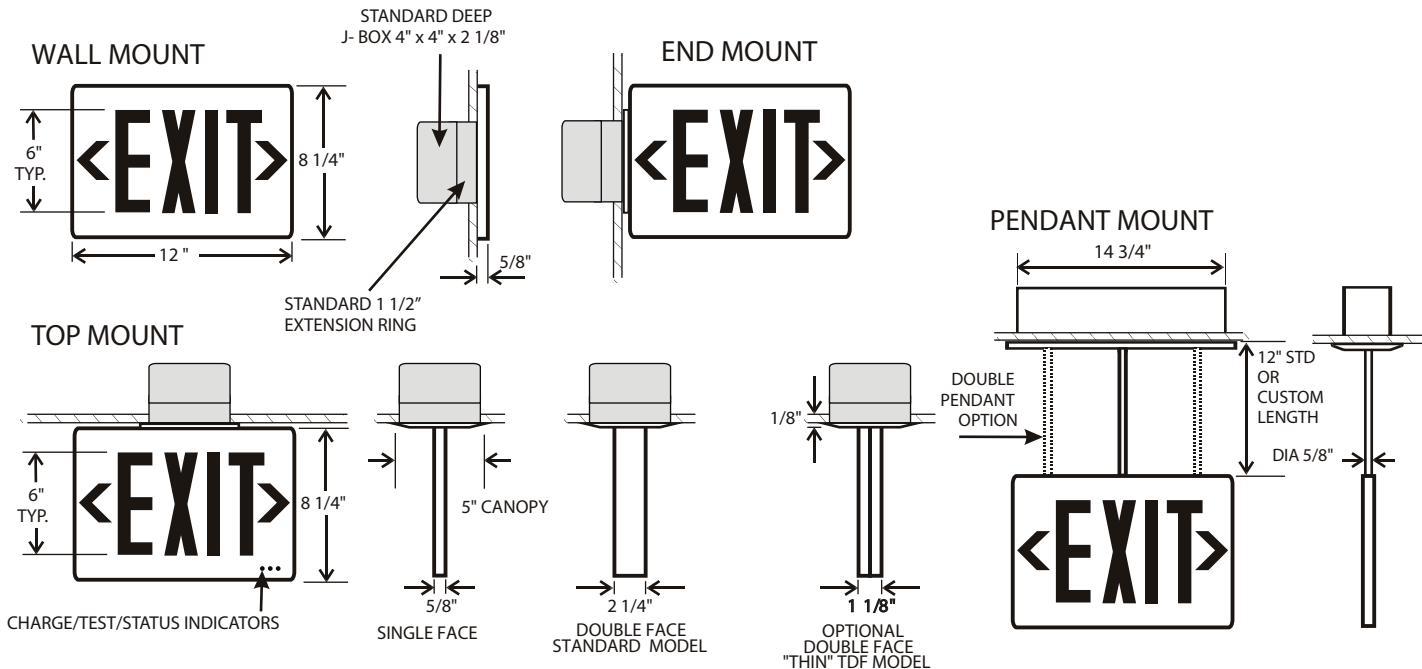
Continuous Monitoring w/ 1 Second Sampling	Every 28 Days	Every 12 Months
Lamp Connections	Transfer switch function	Full 90 minute emergency operation test with test/ fail and manual report signal
Battery Connections	Battery discharge rate under full load	
	Test switch indicator function	

SELF-TEST DIAGNOSTIC FUNCTIONS

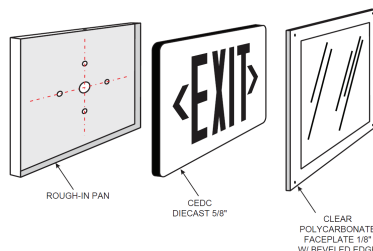
STATUS	LED DISPLAY
NORMAL FULL CHARGE	GREEN ON
NORMAL FAST CHARGE	ORANGE ON
FAILED BATTERY	RED FLASH FAST
FAILED LAMP	GREEN FLASH
FAILED TRANSFER	ORANGE FLASH
FAILED CHARGER	RED FLASH SLOW

MOUNTING DATA & DIMENSIONS

NOTE: PRE-INSTALL 4" X 4" X 2 1/8" DEEP J-BOX WITH 1 1/2" EXTENSION RING FOR ALL MODELS



RECESSED MOUNT KIT



DESIGNED & MANUFACTURED
 IN THE USA

